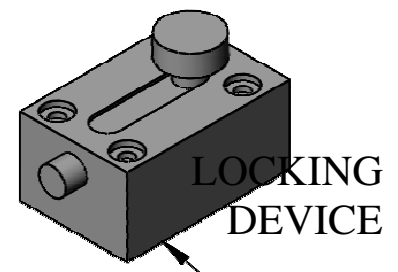
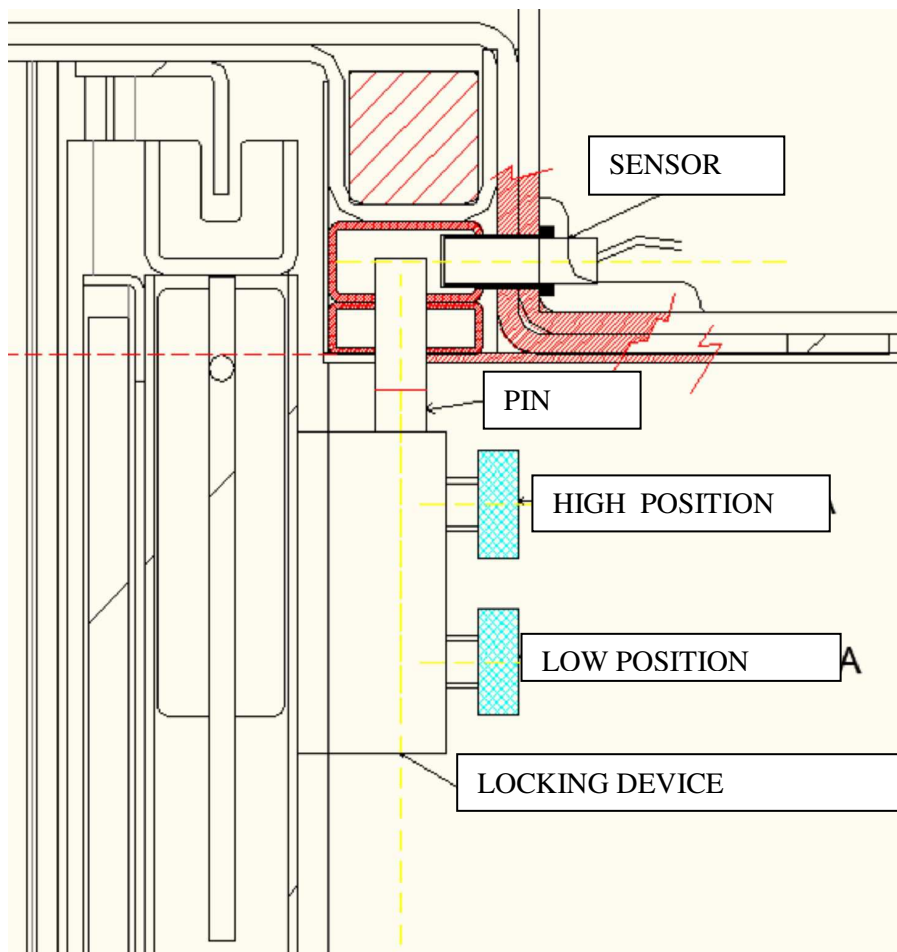


MANUAL LOCKING DEVICE FOR OPEN DOOR-PANEL



USE OF THE LOCKING DEVICE :

The locking device must not be used with the automatic function; it is used only with the semiautomatic function and when door is completely open.

The lock is manually enabled by loosening the knob, turning it all the way up and never leaving it halfway, since the pin detection sensor works only at the end of the knob stroke.

If the knob is left half way and the door is closed, the door will be damaged.

Before closing the door, it is necessary to remove the lock pulling the knob down and screwing it until it locks.